

FW-01

FIQA
WOVEN


FIQA



PRODUCT INFO

FW-01

FIQA
WOVEN

COMPOSITION: 100% PES
MIN. USABLE WIDTH: .. 138 cm | 54"
WIDTH: 142 cm | 56"
WEIGHT: 350 g/m² | 1,00 lb/yd | 497 g/Lm
ROLL LENGTH: 40 m
TARIFF CODE: 54079200



ECO-
FRIENDLY



PFC
FREE



UV
RESISTANT



EASY
CARE



CONTRACT
GRADE



ANTIFUNGAL

TECHNICAL DETAILS

ABRASION

Martindale EN ISO 12947-2 (rubs) 90 000

Wyzenbeek ASTM D4157-02 (cycles) 100 000

SEAM SLIPPAGE

EN ISO 13936-2
Warp: 2,8 mm
Weft: 2,9 mm

ASTM D4034-19
Warp: 72,9 lbf
Weft: 55,6 lbf

TENSILE STRENGTH / BREAKING STRENGTH

EN ISO 13934-1
Warp: 2090,1 N
Weft: 1409,3 N

ASTM D5034-21
Warp: 343,3 lbf
Weft: 304,5 lbf

PILLING

Pilling on Martindale
EN ISO 12945-2 4-5

Brush pill ASTM D3411-92 Grade 5

TEAR STRENGTH	EN ISO 13937-3	Warp: 247,0 N Weft: 381,0 N
	ASTM D2261-13	Warp: 53,1 lbs Weft: 59,7 lbs
COLOUR FASTNESS TO LIGHT	EN ISO 105-B02	7-8
	EN ISO 105-B04	7-8
	AATCC 16.3.2014	2 000 hrs
COLOUR FASTNESS TO RUBBING	EN ISO 105-X12	Wet: 4-5 Dry: 4-5
COLOUR FASTNESS TO SEA WATER	BS EN ISO 105-E02:2013	4-5
COLOUR FASTNESS TO WATER	EN ISO 105-E01	Results below
	Staining to acrylic	4-5
	Staining to polyester	4-5
	Staining to nylon	4-5
	Staining to cotton	4-5
	Staining to acetate	4-5
	Change in colour	4-5
COLOUR FASTNESS TO HYPOCHLORITE BLEACH	BS EN ISO 105-N01:1995	4-5
CERTIFICATES	GREENGUARD / GREENGUARD Gold	Comply
	OEKO-TEX® Standard 100 Class I	Comply

COLOURS



900



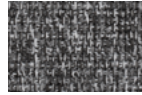
903



904



103



801



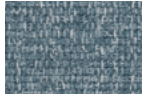
802



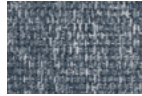
803



804



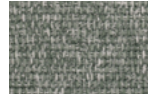
600



602



502



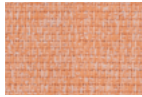
501



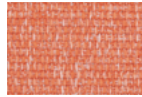
500



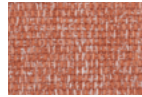
400



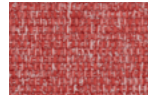
700



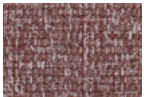
300



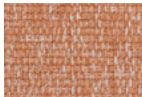
301



200



102



100

USAGE



OUTDOOR



DOMESTIC
USE



OFFICE



PUBLIC
SPACES



MARINE



HOSPI-
TALITY



LEISURE



HEALTH-
CARE



CURTAINS

