

FW-02

FIQA
WOVEN


Fiqa



PRODUCT INFO

FW-02

FIQA
WOVEN

COMPOSITION: 100% PES
MIN. USABLE WIDTH: .. 138 cm | 54"
WIDTH: 142 cm | 56"
WEIGHT: 320 g/m² | 0,92 lb/yd | 454 g/Lm
ROLL LENGTH: 50 m
TARIFF CODE: 54079200



ECO-
FRIENDLY



PFC
FREE



UV
RESISTANT



EASY
CARE



CONTRACT
GRADE



ANTIFUNGAL

TECHNICAL DETAILS

ABRASION	Martindale EN ISO 12947-2 (rubs)	> 40 000
	Wyzenbeek ASTM D4157-02 (cycles)	> 100 000
SEAM SLIPPAGE	EN ISO 13936-2	Warp: 2 mm Weft: 2 mm
	ASTM D4034-19	Warp: 109,8 lbf Weft: 108,9 lbf
TENSILE STRENGTH / BREAKING STRENGTH	EN ISO 13934-1	Warp: 1600 N Weft: 1900 N
	ASTM D5034-21	Warp: 275,6 lbf Weft: 360,1 lbf
PILLING	Pilling on Martindale EN ISO 12945-2	4
	Brush pill ASTM D3411-92	Grade 3,5

TEAR STRENGTH	EN ISO 13937-3	Warp: 120,0 N Weft: 140,0 N
	ASTM D2261-13	Warp: 28,2 lbs Weft: 37,4 lbs
COLOUR FASTNESS TO LIGHT	EN ISO 105-B02	7-8
	EN ISO 105-B04	7-8
	AATCC 16.3.2014	2 000 hrs
COLOUR FASTNESS TO RUBBING	EN ISO 105-X12	Wet: 4-5 Dry: 4-5
COLOUR FASTNESS TO SEA WATER	BS EN ISO 105-E02:2013	4-5
COLOUR FASTNESS TO WATER	EN ISO 105-E01	Results below
	Staining to acrylic	4-5
	Staining to polyester	4-5
	Staining to nylon	4-5
	Staining to cotton	4-5
	Staining to acetate	4-5
	Change in colour	4-5
COLOUR FASTNESS TO HYPOCHLORITE BLEACH	BS EN ISO 105-N01:1995	4-5
CERTIFICATES	GREENGUARD / GREENGUARD Gold	Comply
	OEKO-TEX® Standard 100 Class I	Comply

WATER REPELLENCY	AATCC 22-2001	Grade 90
STANDARD INHERENT FR	EN 1021-1 EN 597-1 BS 5852-0 UFAC CAL 117-2013 NFPA 260	
FR TREATMENT OPTION	EN 1021-2 EN 597-2 BS 5852: Match & Crib 5 Classe 1IM IMO FTP 2010-Part 8 NFPA 701 FMVSS 302	
OPTIONAL FINISHES	IMPERMEABLE BARRIER TPU-ES20 ISO 811	557 mbar

COLOUR TESTING

COLOUR FASTNESS TO RUBBING

COLOUR	300	500	501	600	601	800	801	802	803	804
DRY	4/5	4/5	4/5	4/5	4/5	4/5	4/5	4/5	4/5	4/5
WET	4/5	4/5	4/5	4/5	4/5	4/5	4/5	4/5	4/5	4/5

COLOUR	900	901	902	903
DRY	4/5	4/5	4/5	4/5
WET	4/5	4/5	4/5	4/5

COLOURS



900



901



902



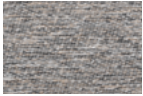
903



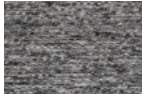
802



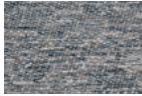
804



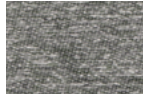
803



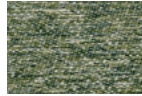
800



600



601



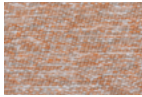
500



501



801



300

USAGE



OUTDOOR



DOMESTIC
USE



OFFICE



PUBLIC
SPACES



MARINE



HOSPI-
TALITY



LEISURE



HEALTH-
CARE



CURTAINS

